

I Love You Sunshine

Moodboard

Colour

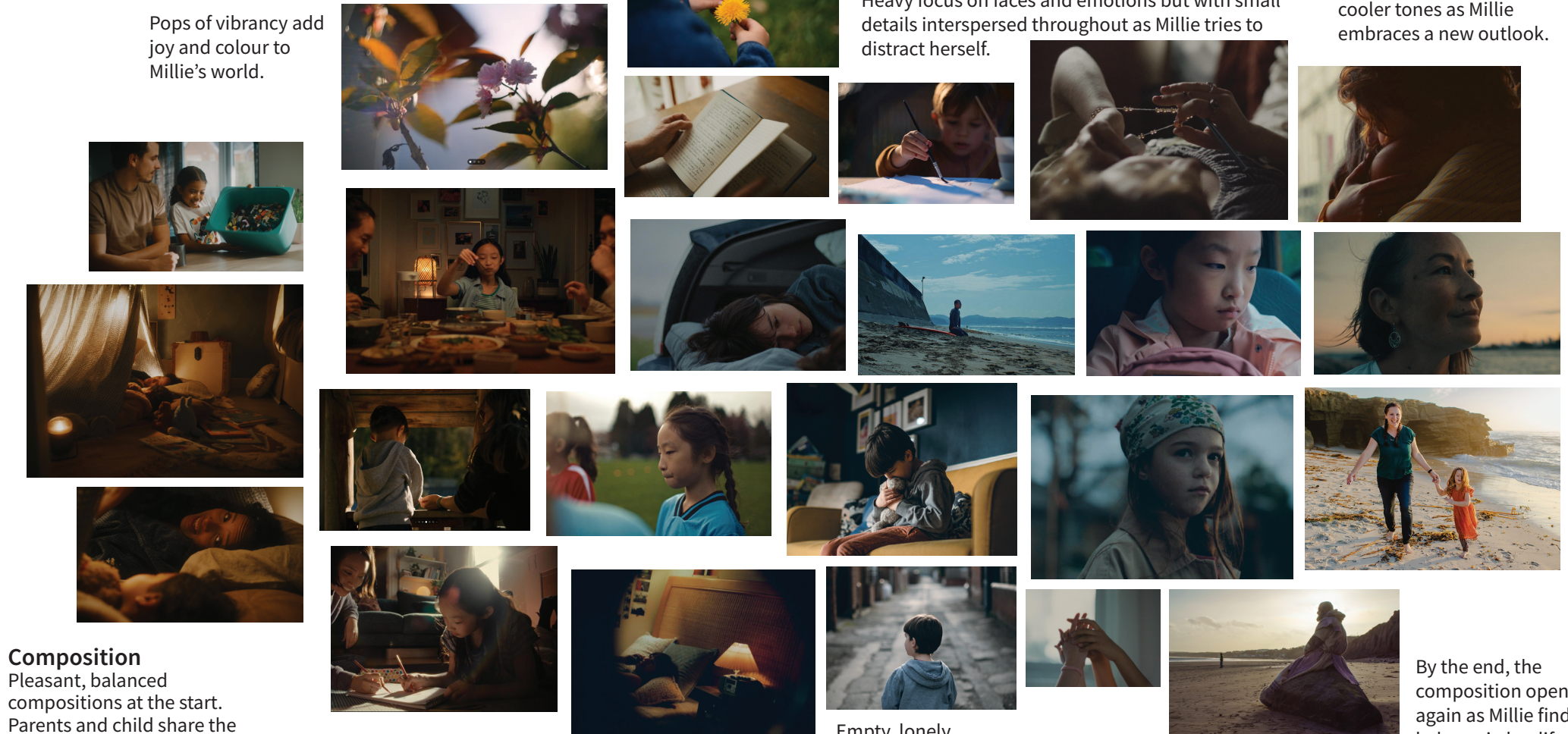
Early on, warm tones reflect Millie's happiness and innocence.

Pops of vibrancy add joy and colour to Millie's world.

As the reality of her loss sets in, the warmth makes way for cooler, colder colour tones and become desaturated, lacking the earlier joy and vibrancy.

By the end, Millie has found a way through her grief and warm colours begin to feed back in, pushing away the cooler tones as Millie embraces a new outlook.

Heavy focus on faces and emotions but with small details interspersed throughout as Millie tries to distract herself.



Composition

Pleasant, balanced compositions at the start. Parents and child share the frame...

...This makes way to tighter framing as Millie's world shrinks in on itself. Adults become pushed to the edge of frame.

Awkward compositions reflect Millie's troubled mind.

Empty, lonely wides emphasise Millie's growing isolation.

The shots get tighter and tighter as Millie struggles to escape her own thoughts.

Millie's face fills the screen and Adults are almost entirely off-screen.

By the end, the composition opens up again as Millie finds balance in her life.

Mother and daughter are depicted together, equal and whole again.